

Design R0260 / Socks in Cable Pattern



Size: 40/41

Materials:

Regia 4-ply Design Line by Arne & Carlos,
100 g in col 03656 Moon Night.

One set size 2.5 mm double-pointed needles [dpns],
Cable needle [cn].

Unwind yarn for 2nd sock as necessary to matching color repeat.

Stockinette: K on RS, p on WS.

Stockinette in rnds: K every rnd.

Rib pattern: K1, p1.

Cable pattern: Work in rounds according to chart. Chart shows odd-numbered rounds only; on all even-numbered rounds, work sts as they appear. Work 12-st pat rep around. Work rnds 1 – 4 once, then repeat rnds 5 – 28 throughout.

6-st cable:

Rnd 1: P1, k4, p1.

Rnd 2: P1, sl 2 sts to cn and hold in front of work, k2, k2 from cn, p1.

Rnds 3 – 5: Work sts as they appear.

Work rnds 1 – 5 once, then repeat rnds 2 – 5 throughout.

Gauge: 30 sts and 42 rows/rnds = 10 x 10 cm in stockinette; 33 sts and 42 rows/rnds = 10 x 10 cm in cable pat.

INSTRUCTIONS

Cast on 64 sts and join for working in the round. Work in stockinette for 3 rnds, then work in rib pat for 3 cm. Next, work in cable pat according to chart and inc [M1L] 8 sts evenly on first rnd = 72 sts = 21 sts on first needle, 18 sts each on 2nd and 3rd needle and 15 sts on 4th needle. Cont in cable pat, working rnds 1 – 28 once, then working rnds 5 – 27 once.

Next, sl last st on first needle to 2nd needle, sl first st on 4th needle to 3rd needle, work in stockinette across the 34 sts on the first and 4th needle and at same time, k2tog twice across these 34 sts = 16 sts each on first and 4th needle and 19 sts each on 2nd and 3rd needle. Cont in cable pat across sts on 2nd and 3rd needle. When cuff measures 18 cm, work **boomerang heel** across 32 sts on first and 4th needle. Refer to [“How to knit socks”](#) on how to work the boomerang heel.

Next, sl first st on 2nd needle to first needle and sl last st on 3rd needle to 4th needle = 17 sts each on first and 4th needle and 18 sts each on 2nd and 3rd needle.

Work first 14 sts on first needle and last 14 sts on 4th needle in stockinette, work 6-st cable across last 3 sts on first needle and first 3 sts on 2nd needle and across last 3 sts on 3rd needle and first 3 sts on 4th needle, work remaining 30 sts on 2nd and 3rd needle in cable pat as established.

When foot measures 21 cm, work the 30 sts on 2nd and 3rd needle in stockinette and at same time, k2tog twice across these 30 sts = 17 sts per needle. Next, work decreases for toe shaping according to size chart.

Design R0260 / Socks in Cable Pattern

Chart

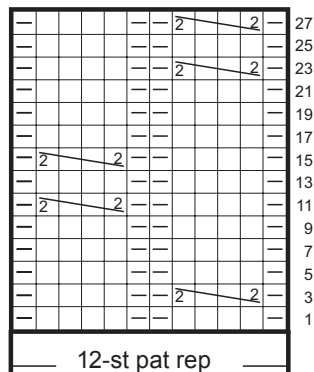


Chart key

□ = k1

□ = p1

= sl 2 sts to cn and hold in front of work, k2, k2 from cn

Size chart for socks knit in Schachenmayr Regia Design Line by Arne & Carlos.
Gauge: 30 sts and 42 rnds/rows = 10 x 10 cm in stockinette on size 2 - 3 mm needles.

Size	22/23	24/25	26/27	28/29	30/31	32/33	34/35	36/37	38/39	40/41	42/43	44/45	46/47
No of sts to cast on / sts per needle	44/11	48/12	48/12	52/13	52/13	56/14	56/14	60/15	60/15	64/16	64/16	68/17	72/18
No of heel sts	22	24	24	26	26	28	28	30	30	32	32	34	36
No of sts for boomerang heel	7/8/7	8/8/8	8/8/8	8/10/8	8/10/8	9/10/9	6/10/9	10/10/10	10/10/10	10/12/10	10/12/10	11/12/11	12/12/12
Length of foot to beg of toe shaping (cm)	11,5	12	13,5	14	15	16,5	17	18	20	21,5	22,5	23	24
Decreases for toe shaping after first dec rnd													
on foll 4th rnd	---	---	---	---	---	---	---	1x	1x	1x	1x	1x	1x
every 3rd rnd	1x	1x	1x	2x	2x	2x	2x	2x	2x	2x	2x	2x	2x
every other rnd	3x	3x	3x	3x	3x	3x	3x	3x	3x	3x	3x	4x	4x
every rnd	4x	5x	5x	5x	5x	6x	6x	6x	6x	7x	7x	7x	8x
Total length of foot (cm)	14,5	15,5	17	18	19,5	21	22	23,5	25	26,5	27,5	28,5	30